

XL TIMING PULLEYS

0.200" Trapezoidal Pitch

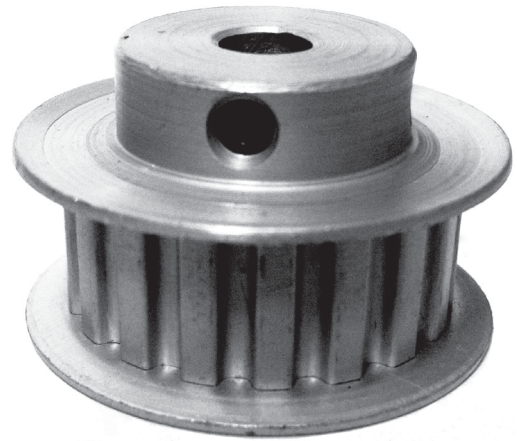
For 3/8" Wide Belts

Hub and Flanges

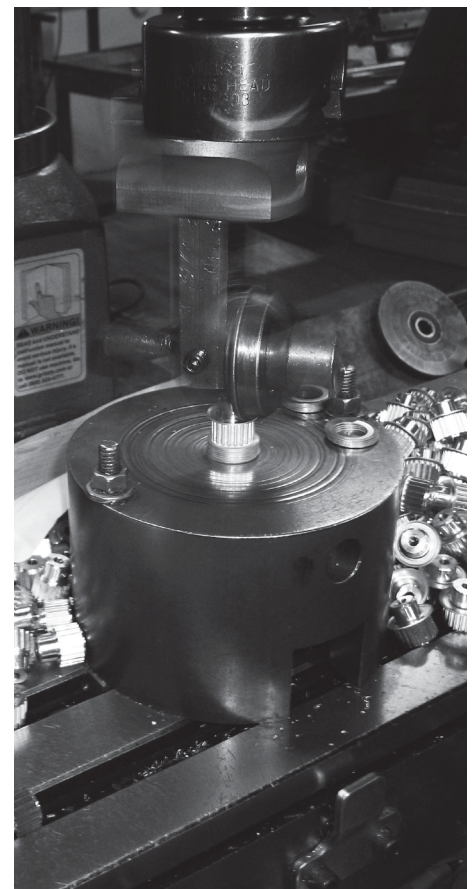
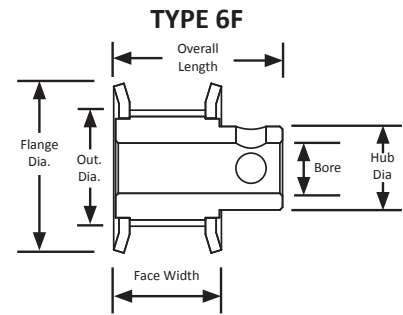
Aluminum

Clear Anodized

Finished Bore



Part Number	No. of Teeth	Type	Pitch Dia. (in)	Out. Dia. (in)	Flange Dia. (in)	Bore (in)	Face Width (in)	Overall Length (in)	Hub Dia. (in)	Set Screw
10XL037-6FA2	10	6F	0.637	0.617	0.875	0.188	0.563	0.812	0.437	2 x 6-40 @ 90°
10XL037-6FA3	10	6F	0.637	0.617	0.875	0.250	0.563	0.812	0.437	2 x 8-32 @ 90°
11XL037-6FA2	11	6F	0.700	0.680	0.938	0.188	0.563	0.812	0.500	2 x 6-40 @ 90°
11XL037-6FA3	11	6F	0.700	0.680	0.938	0.250	0.563	0.812	0.500	2 x 8-32 @ 90°
12XL037-6FA2	12	6F	0.764	0.744	1.000	0.188	0.563	0.812	0.500	2 x 6-40 @ 90°
12XL037-6FA3	12	6F	0.764	0.744	1.000	0.250	0.563	0.812	0.500	2 x 8-32 @ 90°
12XL037-6FA4	12	6F	0.764	0.744	1.000	0.313	0.563	0.812	0.500	2 x 8-32 @ 90°
13XL037-6FA3	13	6F	0.828	0.808	1.063	0.250	0.563	0.812	0.563	2 x 8-32 @ 90°
13XL037-6FA4	13	6F	0.828	0.808	1.063	0.313	0.563	0.812	0.563	2 x 8-32 @ 90°
14XL037-6FA3	14	6F	0.891	0.871	1.094	0.250	0.563	0.812	0.563	2 x 8-32 @ 90°
14XL037-6FA4	14	6F	0.891	0.871	1.094	0.313	0.563	0.812	0.563	2 x 8-32 @ 90°
14XL037-6FA5	14	6F	0.891	0.871	1.094	0.375	0.563	0.812	0.563	2 x 8-32 @ 90°
15XL037-6FA3	15	6F	0.955	0.935	1.188	0.250	0.563	0.812	0.625	2 x 8-32 @ 90°
15XL037-6FA4	15	6F	0.955	0.935	1.188	0.313	0.563	0.812	0.625	2 x 8-32 @ 90°
15XL037-6FA5	15	6F	0.955	0.935	1.188	0.375	0.563	0.812	0.750	2 x 8-32 @ 90°
15XL037-6FA6	15	6F	0.955	0.935	1.188	0.500	0.563	0.812	0.750	2 x 8-32 @ 90°
16XL037-6FA3	16	6F	1.019	0.999	1.250	0.250	0.563	0.812	0.688	2 x 8-32 @ 90°
16XL037-6FA4	16	6F	1.019	0.999	1.250	0.313	0.563	0.812	0.688	2 x 8-32 @ 90°
16XL037-6FA5	16	6F	1.019	0.999	1.250	0.375	0.563	0.812	0.688	2 x 8-32 @ 90°
16XL037-6FA6	16	6F	1.019	0.999	1.250	0.500	0.563	0.812	0.688	2 x 8-32 @ 90°
17XL037-6FA3	17	6F	1.082	1.062	1.312	0.250	0.563	0.812	0.750	2 x 8-32 @ 90°
17XL037-6FA4	17	6F	1.082	1.062	1.312	0.313	0.563	0.812	0.750	2 x 8-32 @ 90°
17XL037-6FA5	17	6F	1.082	1.062	1.312	0.375	0.563	0.812	0.750	2 x 8-32 @ 90°
17XL037-6FA6	17	6F	1.082	1.062	1.312	0.500	0.563	0.812	0.750	2 x 8-32 @ 90°
18XL037-6FA3	18	6F	1.146	1.126	1.375	0.250	0.563	0.812	0.812	2 x 8-32 @ 90°
18XL037-6FA4	18	6F	1.146	1.126	1.375	0.313	0.563	0.812	0.812	2 x 8-32 @ 90°
18XL037-6FA5	18	6F	1.146	1.126	1.375	0.375	0.563	0.812	0.812	2 x 8-32 @ 90°



B&B Manufacturing can provide custom bore finishing to your specifications. We can provide custom bore finishing for a single part or thousands of parts. Our bore finisher can handle nearly any materials in nearly any shape and provide precision sizing and geometric accuracy with nearly any surface finish.